

## WESTERN MUSIC

### PAPER 1 (THEORY)

(Maximum Marks: 70)

(Time allowed: Three hours)

(Candidates are allowed additional 15 minutes for **only** reading the paper.  
They must **NOT** start writing during this time.)

---

Answer **five** questions in all, choosing **two** questions from Section A, **two** from Section B  
and **one** from either Section A or B.

The intended marks for questions or parts of questions are given in brackets [ ].

---

### SECTION A

(Harmony)

#### Question 1

[14]

Either

Complete the following melody on a sheet of manuscript paper according to the pattern given below:

Or

Write a tune for the following words. Indicate tempo and expression marks. Every syllable must be written under the note or notes to which it is to be sung.

Plenty.

Your fields will flower in fullness;  
Your homes will flourish in peace.  
For I the giver of home and harvest  
Will send my rain on the soil.

---

This paper consists of 5 printed pages and 1 blank page.

1217-874 A

© Copyright reserved.

Turn over



Question 2

[14]

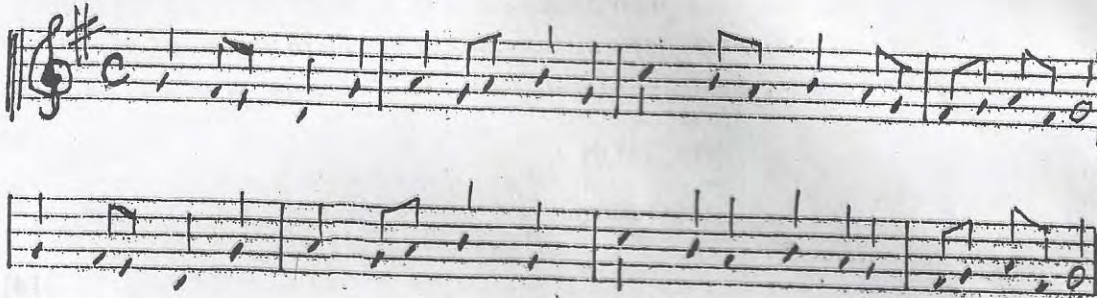
Either

Add Soprano, Alto and Tenor to the following Bass line on the manuscript paper provided.



Or

Add Alto, Tenor and Bass to the following melody:



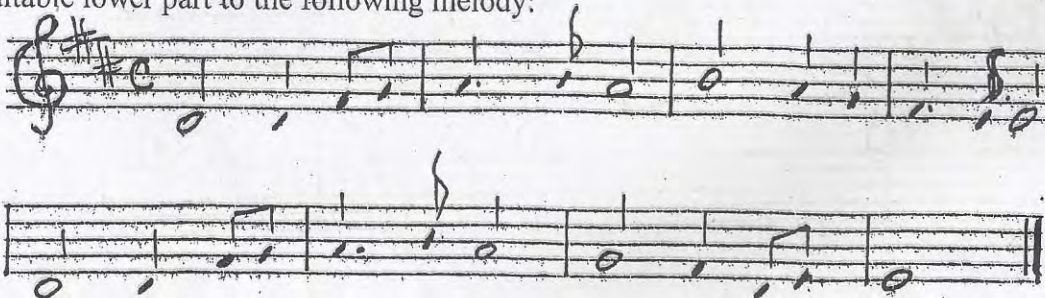
Question 3

[14]

Two part Harmony.

Either

Add a suitable lower part to the following melody:



Or

Add a suitable upper part to the following:





Question 4

[14]

Study the extract from a string quartet given below and answer the questions that follow:

Adagio non troppo

Violin I

Violin II

Viola

Cello

espress.

10

15

*p*, *cresc.*, *f*, *dim.*, *pp*



(a) Trace the modulations in the opening section by naming the keys in the following bars:

bar2.....bar3.....bar5.....  
Bar6.....

(b) Answer true or false to each of the following statements:

(i) The viola sounds the lowest note of the four instruments in only one bar.....

(ii) The second violin sounds the highest note played.....

The harmonic interval between the cello and viola on the fourth quaver of bar 13 is a compound major 6<sup>th</sup> .....

(c) Identify the chords marked \* in bars 10, 13 and 14. State whether it is major, minor, augmented or diminished.

Bar 10..... bar13.....

Bar 14.....

(d) What do the expression marks used in the extract mean:

(i) Adagio non troppo.....

(ii) Espress.....

(iii) Cresc.....

(iv) Dim.....

### SECTION B

#### Question 5

[14]

What are the 4 movements of Beethoven's Symphony No. 2 in D major? Analyse in detail *any two* movements of the symphony. You are expected to cover the following areas: theme, instrumentation, special features of each movement you have selected.

#### Question 6

[14]

Write a short essay on: The life and works of Beethoven. Bring out his achievements and contributions to Symphonic music.

#### Question 7

[14]

What are the differences between a *Prelude* and a *Fugue*? Bring out the features of each, referring to Bach's *Prelude* and *Fugue* no. 16, in G major.



**Question 8**

[14]

Briefly describe the dramatic story of Earl King, by Franz Schubert. Mention the emotions of each character and the terrifying situations each character goes through on this dreadful journey.

**Question 9**

[14]

Caesar Frank exerted considerable influence on music. He developed the use of cyclic form. Referring to his Violin Sonata, illustrate this technique and his achievements as a composer and performer.

**Question 10**

[14]

Write short life-sketches, achievements and reasons for the popularity of *any two* of the following composers:

- (a) Franz Schubert
- (b) Bach
- (c) Caesar Franck