

PATTERN & MARKING SCHEME			
Section	(1) Logical Reasoning	(2) Science	(3) Achievers Section
No. of Questions	5	25	5
Marks per Ques.	1	1	2

SYLLABUS

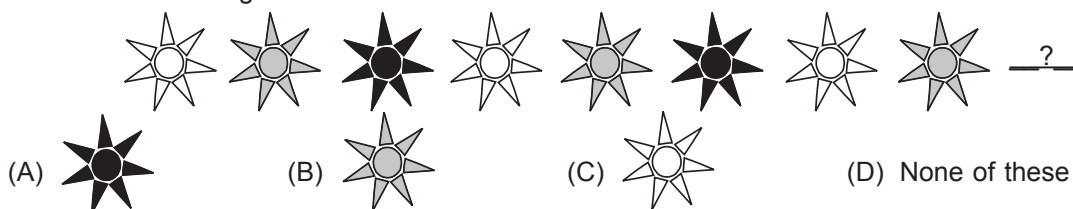
Section – 1 : Patterns, Measuring Units, Odd One Out, Series Completion, Geometrical Shapes, Analogy, Ranking Test, Grouping of Figures, Coding-Decoding, Embedded Figures.

Section – 2 : Plants, Animals, Human Body, Food, Housing and Clothing, Family and Festivals, Good Habits and Safety Rules, Transport and Communication, Air, Water and Rocks, Earth and Universe.

Section – 3 : Higher Order Thinking Questions - Syllabus as per Section – 2.

LOGICAL REASONING

1. Which is the next figure?

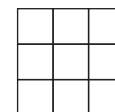


2. Riya is taller than Sarika, Sarika is taller than Preeti. Who is the smallest among them?

- (A) Riya (B) Sarika
(C) Preeti (D) Can't be determined

3. How many squares are there in the figure?

- (A) 9 (B) 12
(C) 13 (D) 14



SCIENCE

4. The given figure shows a black box containing an object. Kunal put his hand into the box and made the following comments.

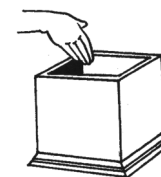
It is cold.

It is rough.

It is hard.

Which sense organ did Kunal use to make these descriptions?

- (A) Ear (B) Skin (C) Tongue (D) Nose



5. My father's nephew or niece is my

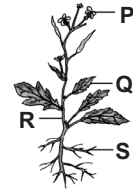
- (A) Cousin (B) Uncle (C) Aunt (D) Brother-in-law.

6. We wear _____ clothes in winter to keep ourselves warm.

- (A) Cotton (B) Nylon (C) Woollen (D) Silk

7. Which part of the given plant produces seeds?

- (A) P
- (B) S
- (C) Q
- (D) R




8. Which of the following modes of transport does NOT have an engine and is NOT pulled by animals?

- (A) Cycle
- (B) Tonga
- (C) Jeep
- (D) Car

9. To which place of worship do Sikhs go to pray?

- (A) Temple
- (B) Mosque
- (C) Church
- (D) Gurdwara

10. Which of the following yields fibre?

- (A)  Barley
- (B)  Tea
- (C)  Cotton
- (D)  Mustard

11. If you face the rising Sun in the morning, the direction on your left is



- (A) North
- (B) South
- (C) East
- (D) West.

12. Which of the following is NOT the property of air?

- (A) Air fills space.
- (B) Air gives shape to things.
- (C) Air has weight.
- (D) None of these

13. Which of the following is the correct order of planets from the nearest to Sun to the farthest?

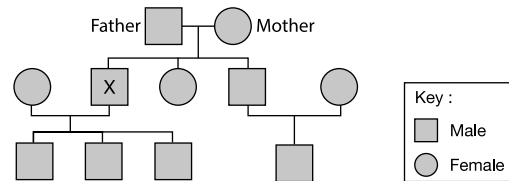
- (A) Mars, Earth, Venus, Mercury
- (B) Mercury, Venus, Earth, Mars
- (C) Mercury, Mars, Earth, Venus
- (D) Venus, Mars, Earth, Mercury

ACHIEVERS SECTION

14. Study the given family tree carefully.

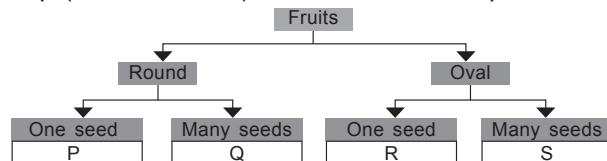
How many nephews does 'X' have?

- (A) Three
- (B) Four
- (C) One
- (D) None



15. Study the given flow chart carefully. In which group (P, Q, R and S) fruit of kiwi can be placed?

- (A) P
- (B) Q
- (C) R
- (D) S



SPACE FOR ROUGH WORK

ANSWERS

1. (A) 2. (C) 3. (D) 4. (B) 5. (A) 6. (C) 7. (A) 8. (A) 9. (D) 10. (C) 11. (A) 12. (D) 13. (B) 14. (C) 15. (D)